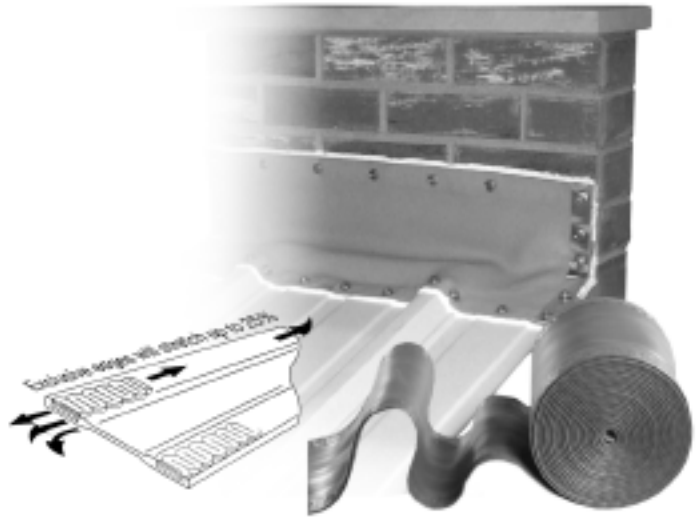


DEKSTRIP™

Expandable Edged Flashing

Stretches to any shape, seals & stays.



Applications

- Large square & round ducts & penetrations
- Expansion Joints
- Gambrel roof
- Chimneys
- Stepped Roof
- Flash between dissimilar materials
- Skylights
- Dissimilar roof profiles
- Transition wall
- Parapet Flashing

Product Features

- 20 year warranty
- Serpentine edges stretch up to 25% for added length
- Wraps around almost any profile
- Great for large round pipes
- Paintable after installation
- Handles vibration & expansion
- TPE has a continuous service temperature range of -58°F to +240°F

Product Specifications

Material.....Grey TPE

Base Kit Contents

- Dekstrip material
- 1" x 4' Aluminum termination strip
- 3" x 2' Splice tape

Selector Guide

Base Kit Part Number	Description	Weight	Fasteners Needed (1-1/2" o.c.)
4157910	7" x 75'	26 lb.	1200
4155910	9" x 75'	31 lb.	1200
4156910	12" x 75'	38 lb.	1200
4171910	18" x 50'	30 lb.	800

Accessories for Dekstrip

Part #	Description	Used On
1175153	1/4-14 x 1-1/8" Scots® T/1	Metal roof and wall
4172910	.040 x 1" x 4' Aluminum Termination Strip	Terminating/joining ends of Dekstrip
4040910	Sikaflex 201 Polyurethane Sealant	Sealing edges on all surfaces
4178910	3" x 2' Splice tape	

Installation Guidelines

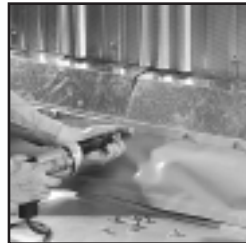
Basic Installation



1. Snap a chalk line to provide a guide for applying sealant.



2. Apply a continuous bead of sealant along chalk line.



3. Position top edge of Dekstrip over seal bead and install Buildex fasteners at 1-1/2" maximum intervals on top edge. Repeat steps 1, 2, and 3 for the bottom edge.

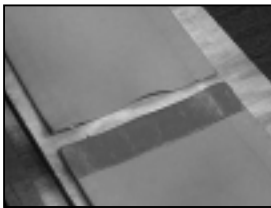


4. Apply additional sealant to both fastened edges for maximum weather-tight sealing.

Splicing

Materials Needed:

- Leather Gloves
- Heat Gun
- 3" x 2' splice tape
- Shears or scissors



1. Apply splice tape to Dekstrip.



2. Position second Dekstrip over tape & press in place.



3. Apply heat and press firmly to seal edges.

Detailed Instructions

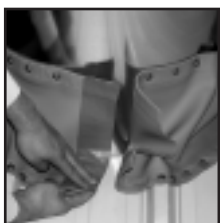
1. Cut splice tape (supplied in Dekstrip carton) to the width needed and remove clear film from one side of the tape. Lining up the edges, press the tape firmly onto the Dekstrip to remove air pockets.

2. Remove remaining film from tape. Apply second piece of Dekstrip over tape and press firmly.

3. Apply heat over spliced area for 1-2 minutes while applying firm pressure over entire spliced area to ensure adhesion.

4. Turn material over and repeat step 3.

Joining ends around round pipes



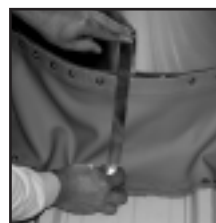
1. Cut splice tape to length, remove film from one side and apply to Dekstrip.



2. Remove film from top of splice tape.



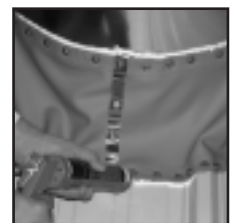
3. Overlap top piece of Dekstrip and press onto tape.



4. Fold termination strip in half, cut to width, and slide over spliced area.



5. Fasten through top of termination strip, Dekstrip, and back of strip with Scots® fasteners or rivets.



6. Apply sealant to all seams.

